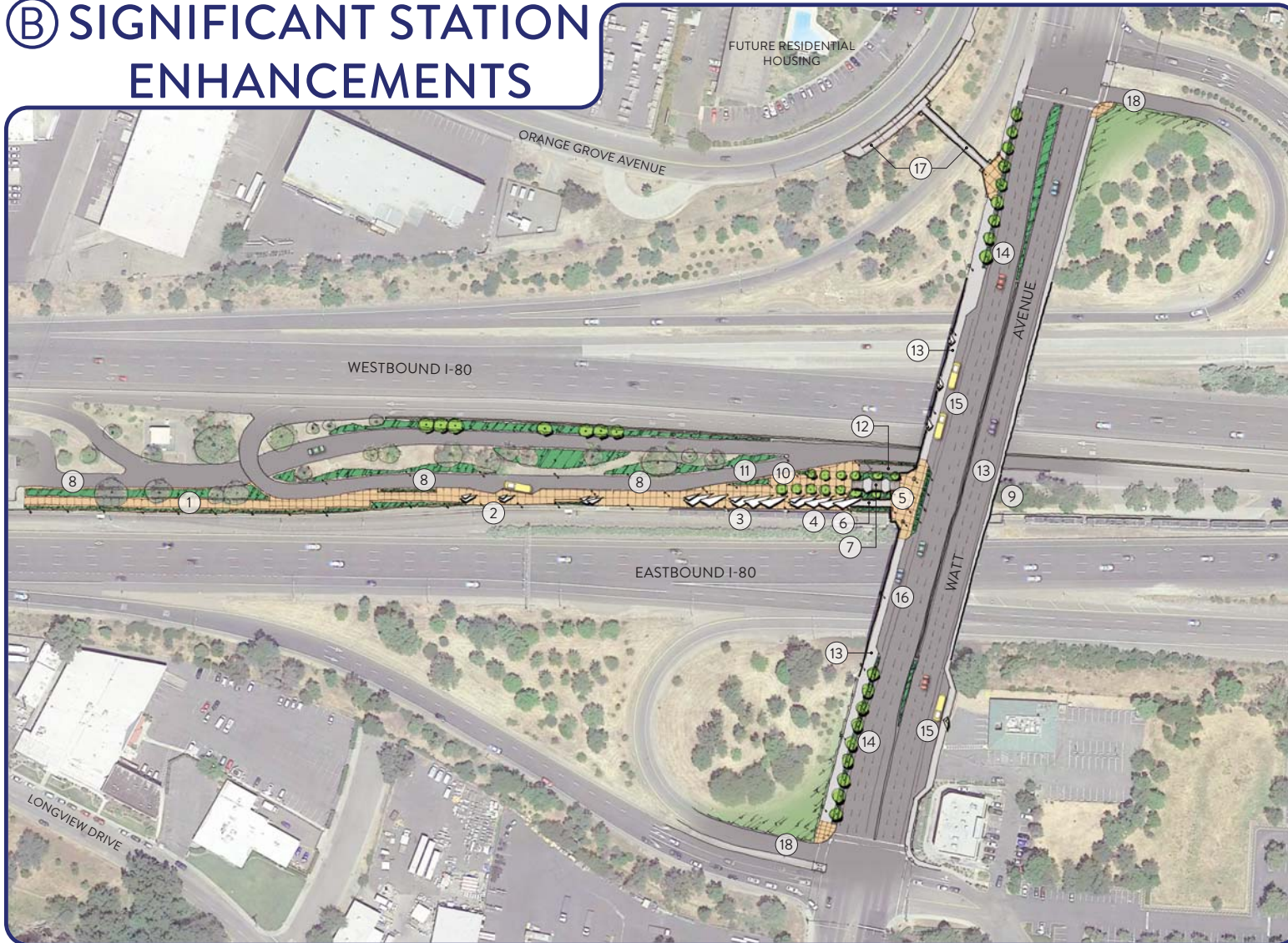


B SIGNIFICANT STATION ENHANCEMENTS



LEGEND

- ① Pedestrian promenade leading from parking lot to station
 - Pedestrian lighting
 - Wide walkway
- ② Reduction of bus bays to two and relocation
- ③ Lighter, more open architecture for station structures
 - White or lighter color
 - Angled, sawtoothed/louvered design lets natural light in while providing shade and rain shelter
 - Lighter roof allows for a smaller support structure and columns reducing hiding spaces, blind corners, and visual "weight" of the structure
- ④ New elevator and restroom structure
 - Maximize visibility around the structure
 - Eliminate the visual obstruction by the new staircase.
- ⑤ Watt Ave station plaza
 - Pedestrian lighting
 - Removal of concrete barriers to improve visibility
 - Pilasters to break up the space and protect peds from errant cars
 - Wayfinding
 - RT station monument
 - Planted buffer between plaza and roadway
- ⑥ Bridge extends to the new elevator structure
- ⑦ Staircase
 - Can be substituted with an escalator
- ⑧ Low maintenance landscaping and lighting around the station
- ⑨ Removal and replacement of existing structures, elevators, and stairs on east side of Watt
 - Elimination of bus stops on east side of freeway overcrossing structure
- ⑩ Pedestrian friendly station plaza
 - Lots of lighting
 - No obstructions
 - Plaza trees provide shade in the summer and allow light through during the winter
 - Wayfinding kiosk and signage
- ⑪ Bus onramp shortened to merge with main onramp before crossing under Watt Ave
- ⑫ Maintenance vehicle access under Watt Ave overcrossing
 - Ornamental metal fence and gate restricts access under the overcrossing to official use only
- ⑬ Wider sidewalks on both sides of Watt Ave
 - From 4ft to 11ft on the west side
 - From 4ft to 5ft on the east side
- ⑭ A more pedestrian friendly western side of Watt Ave
 - Pedestrian level lighting
 - Vehicular lanes reduced to 11ft wide
 - 5ft shoulders allow for future conversion into bike lanes
 - Concrete barrier to deter jaywalking
 - Plant strips and street trees for pedestrian safety
- ⑮ Bus stop with shelters to match new station architecture
- ⑯ Kiss-n-ride and TNC pickup/dropoff
- ⑰ Pedestrian bridge and ramp
- ⑱ Squared up onramps for safer pedestrian crossings

RE-IMAGINE WATT/I-80

