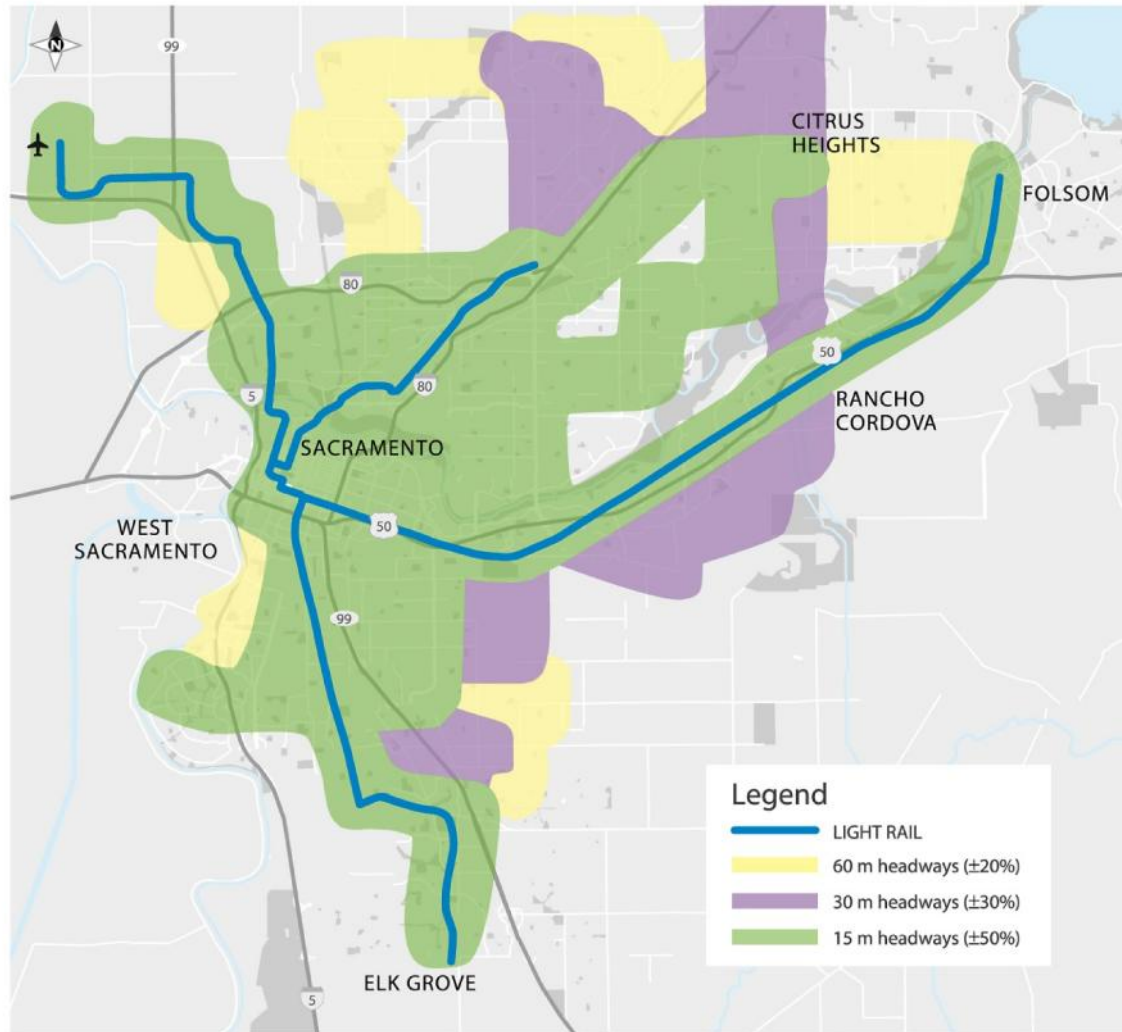


## 2. Increased Services and Frequencies (Expanded)

\$50 Million +



- 15 Minute Weekday Bus Routes: 4 to 15
- 30 Minute Bus Routes (7 days): 2 to 20
- Weekday LRS: 10 Minutes (peak) to 15 Minutes
- Weekend LRS: 15 minutes
- Expanded Network and Key Area Coverage
- More Evening and Weekend Service
- Reliability Issues Resolved