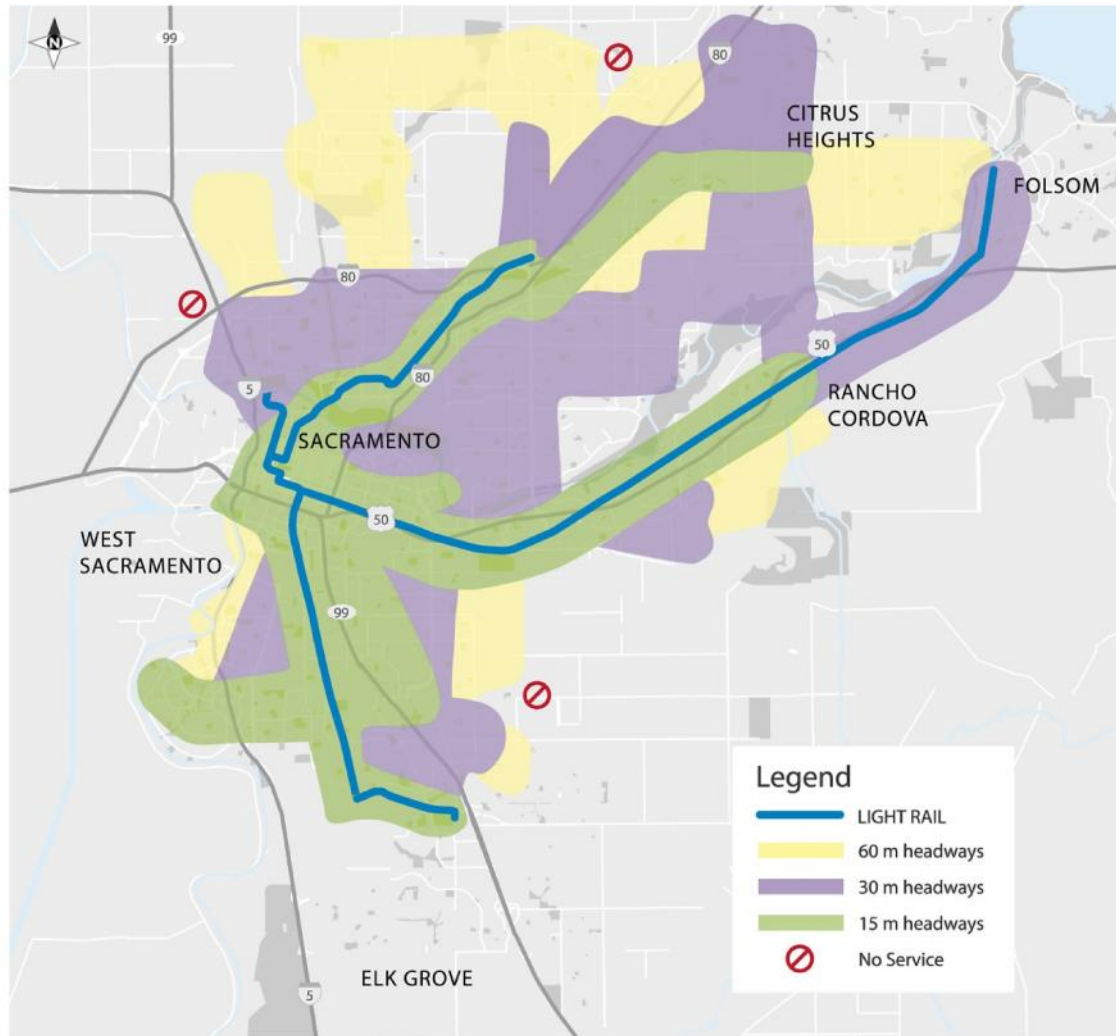


2. Increased Services and Frequencies (Existing)

Existing Service



- 4 Weekday Bus Routes with 15 Minute Service
- 2 Sunday Bus Routes with 30 Minute Service
- 15 Minute LRS on Weekdays (30 Minutes to Folsom)
- 30 Minute Light Rail Service on the Weekend
- Gaps in Coverage